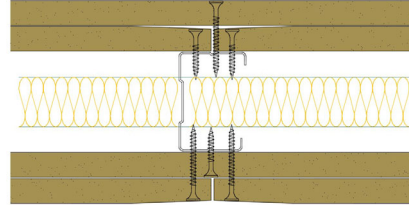


50-S-57(25) - SPEEDLINE System Data Sheet - Version V1 (24-10-23)

SPEEDLINE 50mm 'C' Stud Partition @600mm Ctrs,
with 2x Siniat GTEC 12.5mm Standard Board each
side, 25mm APR



System Performance Breakdown

Fire Resistance:

BS476 Part 22:1987:

Test Ref & Date or Applied Ref & Report:

Max Height:

Thickness:

Duty Grade: BS 5234: Part 2:1992:

Sound Insulation:

60/60 Minutes (Integrity/Insulation).

- BRE Report P102396-1011C

Refer to Speedline Specification Clause

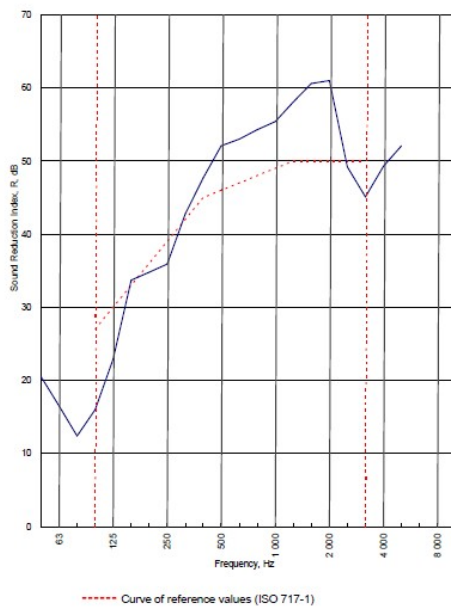
102 mm. (At Base Track, Excluding Finishes)

Severe - Annexes A-F

46 R_wdB, Date Tested or Assessed Against - 26/07/2011

Test Code:
H17500AA
Test Date:
26/07/2011

Freq. Hz	R dB
50	20.5
63	16.5
80	12.4
100	16.0
125	22.9
160	33.7
200	34.8
250	35.9
315	42.8
400	47.7
500	52.1
630	53.0
800	54.3
1 000	55.4
1 250	58.1
1 600	60.6
2 000	61.0
2 500	49.2
3 150	45.1
4 000	49.3
5 000	52.1
6 300	
8 000	
10 000	



Rating according to BS EN ISO 717-1:1997 **R_w (C;Ctr) = 46 (-4;-11) dB**
 Max dev. 11 dB at 100 Hz
 Evaluation based on laboratory measurement results obtained by an engineering method:
 C₅₀₋₃₁₅₀ = -6 dB C₅₀₋₅₀₀₀ = -5 dB C₁₀₀₋₅₀₀₀ = -3 dB
 C₁₂₅₋₃₁₅₀ = -16 dB C₁₂₅₋₅₀₀₀ = -16 dB C₁₀₀₋₁₀₀₋₅₀₀₀ = -11 dB

TESTED AT ONE OF THE UKAS ACCREDITED LABORATORIES BELOW

B.T.C (H-Ref on Graph)

B.R.E

AIRO

S.R.L

Customer: Metsec plc Hepsec Division

BTC 17500A: Page 9 of 11



SPEEDLINE Drywall Systems, Adsetts House, 16 Europa View, Sheffield Business Park, Sheffield, S9 1XH.

Tel: 0114 231 8030.

Email: enquiries@speedlinedrywall.co.uk

(As per the requirements set out in ISO/IEC 17025:2017 regarding test data the results stated have been carried out by voestalpine Metsec plc as part of the contract to supply Speedline Metal Sections to SIG Plc)